

## Bringing the Web of Life to Life

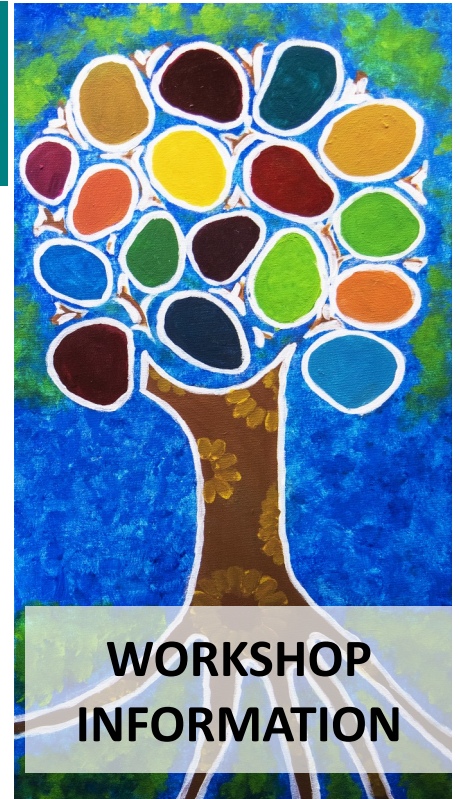
Helene Fisher

This hands-on workshop is about engaging the head, hearts, and hands of students as they connect with the flora and fauna of their bioregion, get to know them, make a simple mask to represent them and then speak on their behalf.

This cross-curricular program adapted for both primary and secondary levels, gives students a sound basis for developing empowered environmental projects flowing out of their discoveries of not-always-visible interconnections in nature, and of consequences of human actions.

Helene has 32 years teaching experience, 15 of those years in Environmental Education.

Curriculum links: Biological Science, Geography, Health, The Arts, English & Sustainability  
Cross Curriculum Priority



## WORKSHOP INFORMATION

**Thursday**

**20 May 2021**

**3.30-5pm**

(3.30-4pm networking  
4.00-5pm workshop)

### VENUE

One World Centre  
5 King William St,  
Bayswater, WA.

### COST

\$15 members  
\$25 non members

### REGISTRATION

Register through

Trybooking: [https://  
www.trybooking.com  
/BQUBB](https://www.trybooking.com/BQUBB)



**THE GLOBAL GOALS**  
For Sustainable Development

This workshop links with  
Sustainable Development Goals  
14. Life Below Water & 15. Life on  
Land.

### INFORMATION AND ENQUIRIES

For further information about the presenters and workshop, go to :  
<https://www.oneworldcentre.org.au/bringing-the-web-of-life-to-life/>

For other enquiries contact the One World Centre  
[owc@oneworldcentre.org.au](mailto:owc@oneworldcentre.org.au) or phone (08) 9371 9133